

Product Specifications

Style Number	VV566
Construction	Mineral Core
Edge Profile	Accent Bevel
Nominal Dimensions	12" wide, 24" long

	US Units	Metric Units
Actual Product Width	11.93"	30.3 cm
Actual Product Length	23.86"	60.6 cm
Overall Product Thickness	0.314"	8 mm
Core Thickness	0.197"	5 mm
Attached Underlayment	Attached Cork	
Attached Underlayment Thickness	0.039"	1 mm
Installation Methods	Floating or Direct Glue	
Profile	Angle/Tap	
Country of Origin	Imported	

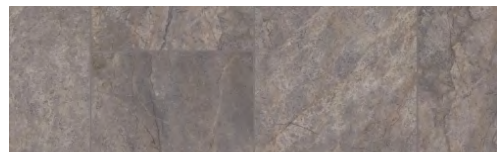
Packaging

Area per Box	23.72 sq ft	2.2 sq m
Pieces per Box	12 pcs	
Weight per Box	54.37 lbs	24.66 kg
Boxes per Pallet	48 boxes	

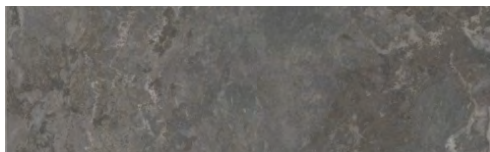


12241 Feronia

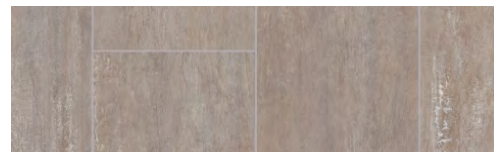
Colors



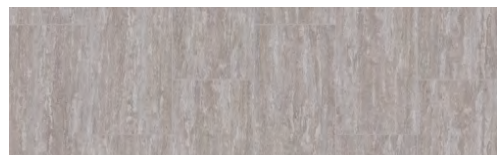
12241 Feronia



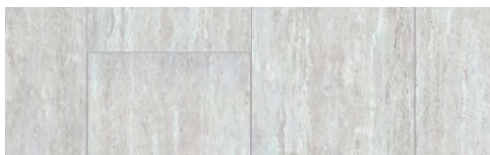
12242 Sabine



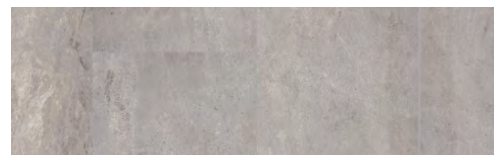
12243 Arubani



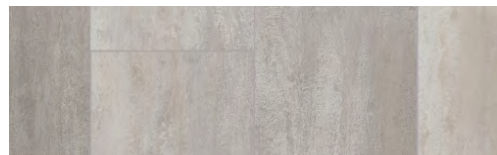
12244 Anjea



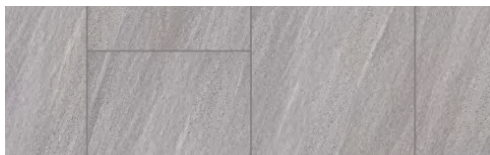
12245 Mari



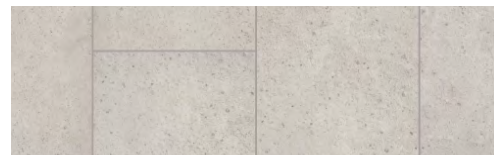
12247 Harmonia



12248 Selene



12249 Ashani



12250 Edesia



COREtec Stone 12x24 Matte

Performance

Static Load (ASTM F970)	Passes
Residual Indentation (ASTM F1914)	Passes
Resistance to Heat (ASTM F1514)	Passes
Resistance to Chemicals (ASTM F925)	Passes
Smoke Density (ASTM E662)	Passes
Radiant Panel (ASTM E648)	Passes, Class I
Slip Resistance (ASTM D2047)	ADA compliant

Warranties

- USF Lifetime
- USF 10 Year Medium Commercial

Certifications

GreenGuard (Certification, Gold, Private Label) Certified

Product Specifications

Style Number	VV567	
Construction	Mineral Core	
Edge Profile	Accent Bevel	
Nominal Dimensions	18" wide, 24" long	
	US Units	Metric Units
Actual Product Width	18.54"	47.09 cm
Actual Product Length	23.86"	60.6 cm
Overall Product Thickness	0.314"	8 mm
Core Thickness	0.197"	5 mm
Attached Underlayment	Attached Cork	
Attached Underlayment Thickness	0.039"	1 mm
Installation Methods	Floating or Direct Glue	
Profile	Angle/Tap	
Country of Origin	Imported	

Packaging

Area per Box	24.58 sq ft	2.28 sq m
Pieces per Box	8 pcs	
Weight per Box	56.22 lbs	25.5 kg
Boxes per Pallet	48 boxes	



18241 Egeria

Colors





COREtec Stone 18x24 Matte

Performance

Static Load (ASTM F970)	Passes
Residual Indentation (ASTM F1914)	Passes
Resistance to Heat (ASTM F1514)	Passes
Resistance to Chemicals (ASTM F925)	Passes
Smoke Density (ASTM E662)	Passes
Radiant Panel (ASTM E648)	Passes, Class I

Warranties

- USF Lifetime
- USF 10 Year Medium Commercial

Certifications

GreenGuard (Certification, Gold, Private Label) Certified

Product Specifications

Style Number	VV578	
Construction	Mineral Core	
Edge Profile	Accent Bevel	
Nominal Dimensions	18" wide, 24" long	
	US Units	Metric Units
Actual Product Width	18.5"	46.99 cm
Actual Product Length	23.86"	60.6 cm
Overall Product Thickness	0.314"	8 mm
Attached Underlayment	Attached Cork	
Attached Underlayment Thickness	0.039"	1 mm
Installation Methods	Floating or Direct Glue	
Profile	Angle/Tap	
Country of Origin	Imported	

Packaging

Area per Box	24.53 sq ft	2.28 sq m
Pieces per Box	8 pcs	
Weight per Box	65.37 lbs	29.65 kg
Boxes per Pallet	40 boxes	



18221 Sonia

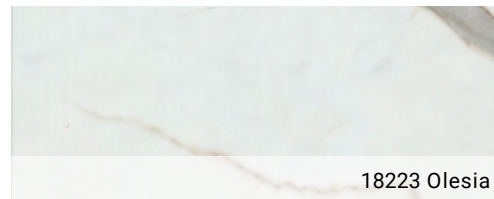
Colors



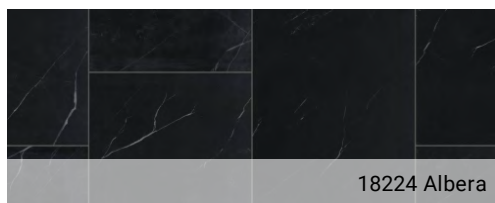
18221 Sonia



18222 Antea



18223 Olesia



18224 Albera



COREtec Stone 18x24 Polished

Performance

Static Load (ASTM F970)	Passes
Residual Indentation (ASTM F1914)	Passes
Resistance to Heat (ASTM F1514)	Passes
Resistance to Light (ASTM F1515)	Passes
Resistance to Chemicals (ASTM F925)	Passes
Smoke Density (ASTM E662)	Passes
Radiant Panel (ASTM E648)	Passes, Class I
Slip Resistance (ASTM D2047)	ADA compliant

Warranties

- USF Lifetime
- USF 10 Year Medium Commercial

Certifications

GreenGuard (Certification, Gold, Private Label) Certified